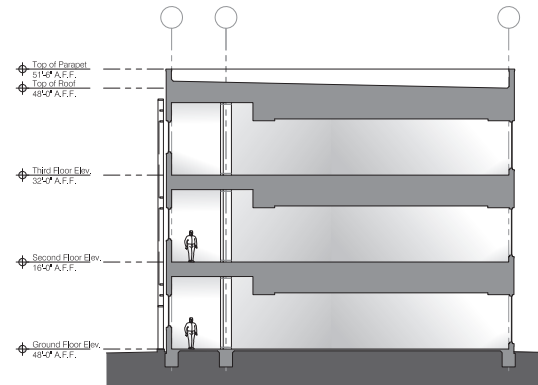
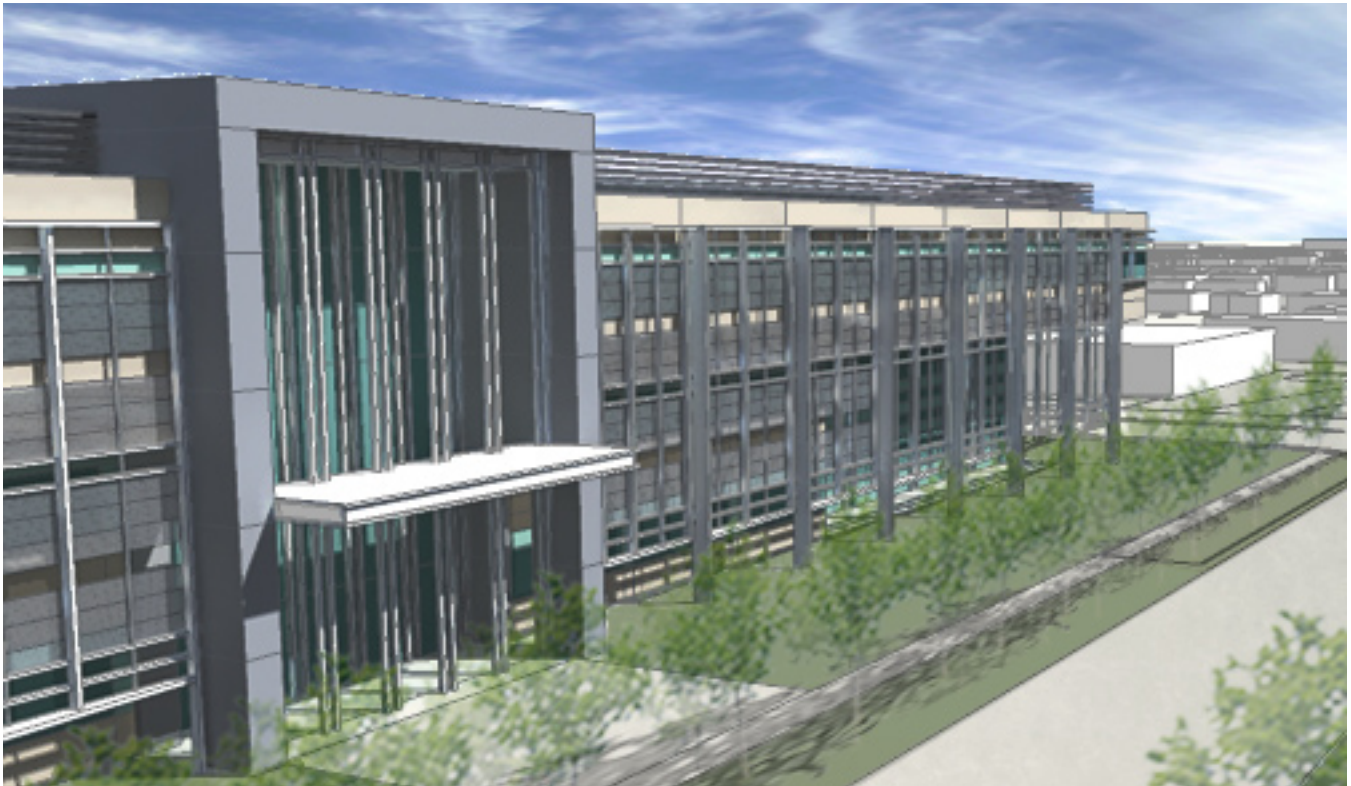


oklahoma health care authority

As a portion of a cohesive master plan for Lincoln Renaissance Boulevard, the Oklahoma Healthcare Authority building will house the department in its entirety with room for 10 year future expansion. Circulation is handled by a double loaded, tapered central spine allowing natural day lighting from above to the interior spaces. The north side of the facility acts as a gateway identifier to the State Department corridor and capital campus.

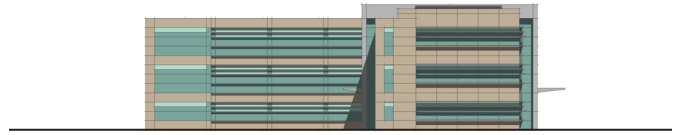


location	oklahoma city, oklahoma
client	state of oklahoma
project designer	david hornbeek, anthony blatt & jp craig
budget	\$ 53,900,000
construction	unbuilt
services	schematic design visualization

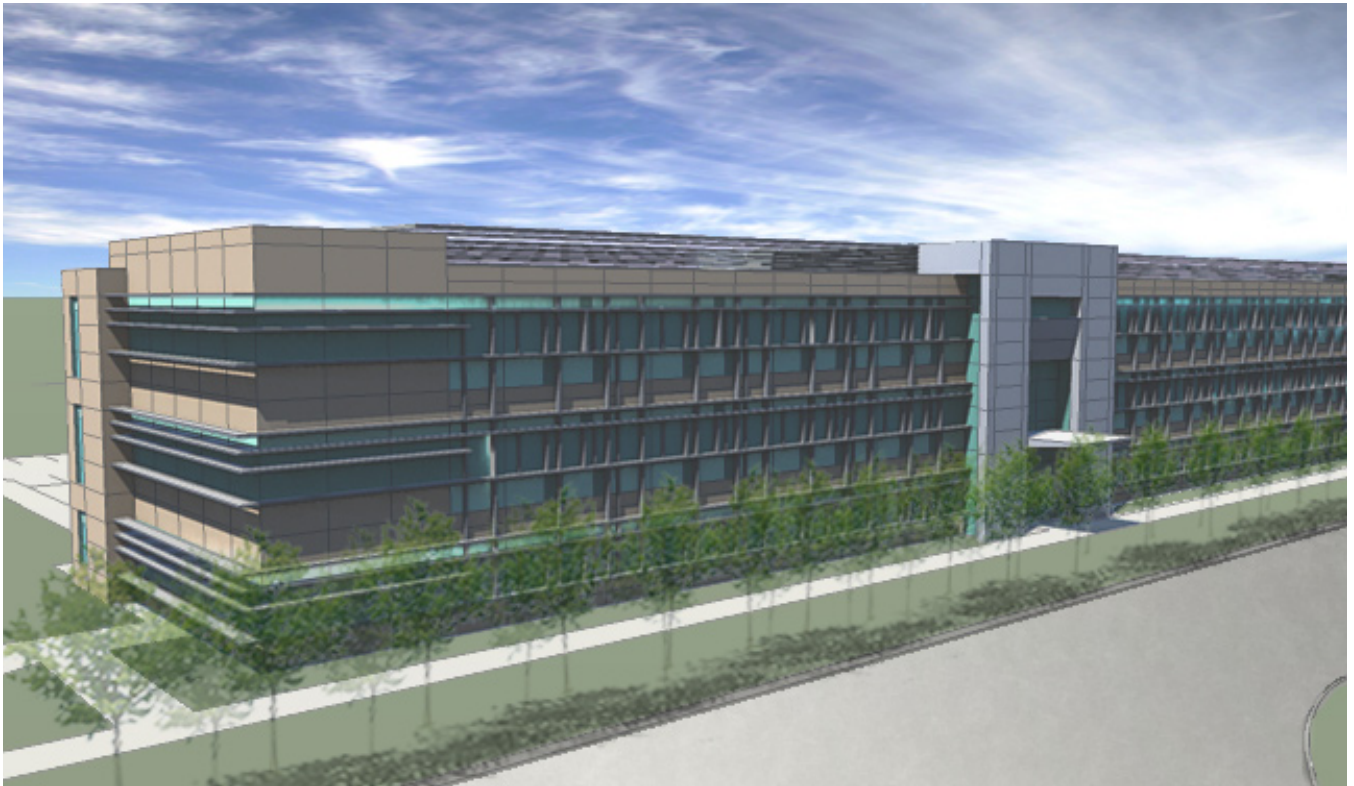
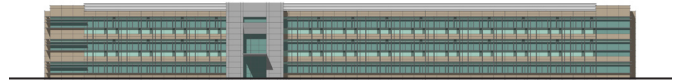


oklahoma department of mental health

As a portion of a cohesive master plan for Lincoln Renaissance Boulevard, the Department of Mental Health facility will house the department in its entirety with room for 10 year future expansion. Circulation is handled by a single loaded translucent spine allowing natural day lighting from both east and west facades. The north side of the facility acts as a gateway identifier to the State Department corridor and capital campus.

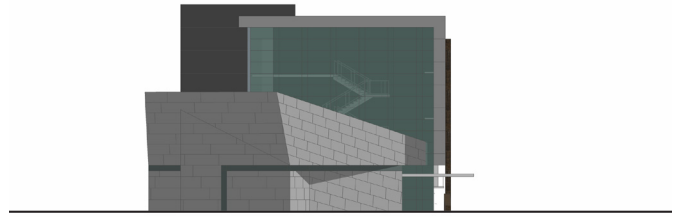


location	oklahoma city, oklahoma
client	state of oklahoma
project designer	david hornbeek, anthony blatt & jp craig
budget	\$ 24,500,000
construction	unbuilt
services	schematic design visualization



oklahoma department of veterans affair

As a portion of a cohesive master plan for Lincoln Renaissance Boulevard, the Veterans Affairs facility will house the department in its entirety with room for 10 year future expansion. Circulation is handled by a single loaded translucent spine allowing natural day lighting from both east and west facades. At the corner of a main thoroughfare, a state training and meeting auditorium becomes an abstract art piece for destination recognition and a link to the adjacent Veterans Memorial.



location	oklahoma city, oklahoma
client	state of oklahoma
project designer	david hornbeek, anthony blatt & jp craig
budget	\$ 2,940,000
construction	unbuilt
services	schematic design visualization

